

# Raphael house is a labor of love...

that touches the lives of homeless families as well as the lives of everyone who gives. I have been a volunteer with Raphael House since 1990 and have learned that although Raphael House is small, it makes a big impact in our community.

Families who have been homeless for one reason or another receive the love and support of the staff and volunteers in a true home-like environment. The ultimate goal for these families is that we help them find their inner resources to succeed and move on from Raphael House and into the larger community. I am constantly inspired by the strength of these not-so-fortunate families. I often wonder if my family were put in similar circumstances would we have the inner resources available to recover without the support of the community.

Members of the Board are constantly inspired by the dedication of the staff at Raphael House. One recent example that comes to mind is when the tough economic times of the last couple of years started to make an impact on Raphael House, many staff voluntarily came forth asking that their own salaries be reduced. As a result, Raphael House continues to have a balanced budget and its full array of wonderful programs.

People who donate their time and money at Raphael House enjoy telling me about how Raphael House has inspired their lives. The common thread among many of the stories is that helping those who are less fortunate achieve their personal goals is a very gratifying experience.

I have enjoyed serving as the Board Chair this past year because I believe so strongly in the strength and service Raphael House offers to struggling families. And I love the vitality of the volunteers from the community at large which help to make Raphael House such a special place.

If you've been a supporter for many years, I thank you! If you are new to the work of Raphael House, I hope you'll come by for a tour.

On behalf of the full Board of Directors, thank you so much for your help.

Sincerely,



Devin Dixon  
Board Chair

**OUR MISSION** Raphael House is dedicated to helping at-risk children and their families achieve stable housing and financial independence, while strengthening family bonds and personal dignity.

Established in 1971 as the first shelter in San Francisco for homeless families, today Raphael House has a dedicated staff and Board of Directors from the local community, along with a small core of live-in staff who are Orthodox Christian. No religious obligations are placed on the families we serve.

Raphael House relies solely on private sources to meet its annual budget. Support is received from individuals, businesses and corporations, foundations, special events, church groups, and civic organizations that are committed to promoting stability for at-risk families. We do not seek or accept federal, state, or municipal government funding.

By enlisting the support of the community for our work, Raphael House sets in motion a cycle of renewal. During the years of service at our Sutter Street facilities, beginning in 1977, we have sheltered more than 10,000 children and their parents; and more than 12,000 individuals have invested financial and volunteer support to assist Raphael House.

A teal-tinted background image showing a field of flowers in the foreground and rolling hills in the distance under a cloudy sky.

# STABILITY

Helps Families Thrive

## ***What difference does a stable household make to families?***

*How can routine patterns contribute to achieving and maintaining secure housing and financial independence?*



Our children and families arrive wounded and traumatized from domestic violence, emotional and mental volatility, cramped living situations, violent surroundings, and difficult pasts. They struggle daily with poverty and fear. They have all been homeless.

The Raphael House strategy for helping families in crisis is straightforward and successful. We have an orderly environment, predictable daily patterns, consistent staffing, simple beauty, good food, and wonderful programs for children and adults. Raphael House is not a place for people to stay simply while searching for housing; it is a HOME, a place where children and adults can heal, learn, grow, and thrive.

So, what difference does a stable household make to families? How can routine patterns contribute to achieving and maintaining secure housing and financial independence?

Last year, a full 81 percent of our families moved from our shelter into secure housing; and 95 percent of families in our AfterCare Programs (provided to families after they leave Raphael House) maintained their stable housing.



# RESOURCES

## Help Rebuild Families' Lives

The Raphael House Residential Program provides temporary shelter to homeless parents and their children. The shelter is open 24 hours a day and includes private bedrooms, common living and play rooms, tutorial areas, and laundry facilities.

When families enter Raphael House, they are paired with a case worker who assists them throughout their three to six month stay by helping them with financial planning, job searches, housing searches and parenting issues. Residents receive referrals to a wide range of job training programs and to social service providers throughout the Bay Area.

“Without Raphael House, I couldn't have come up with a long range plan,” explains Bonnie. “The first thing I learned is that the first bill I pay every month is rent. I don't know what would have happened to me and my children without all their support, encouragement, and caring.”

In addition, many aspects of life at Raphael House are shared activities — residents enjoy family-style meals in the dining room, participate in evening activities (instead of television), help with household chores, and share the educational facilities.

These activities foster a spirit of understanding and cooperation within the larger community.

“Families are getting shelter and support, but they are also getting energized to pick themselves up and dust themselves off,” says one volunteer and board member. “What I like about Raphael House is the structure of the program and the discipline it encourages in the parents. I like the whole empowering message I see exemplified here.”

# SECURITY

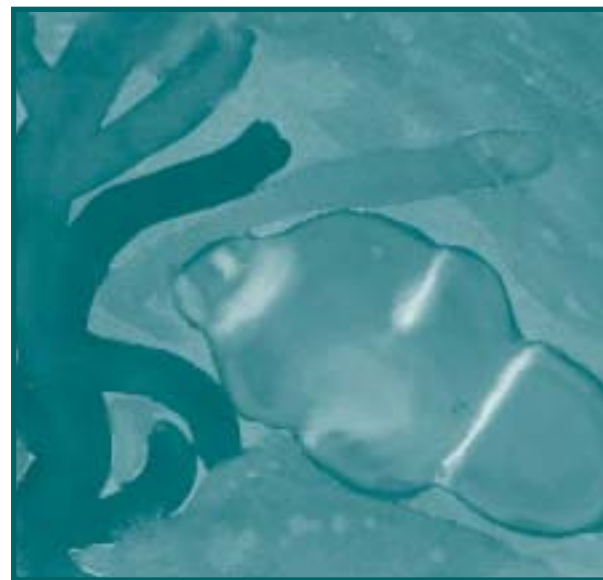
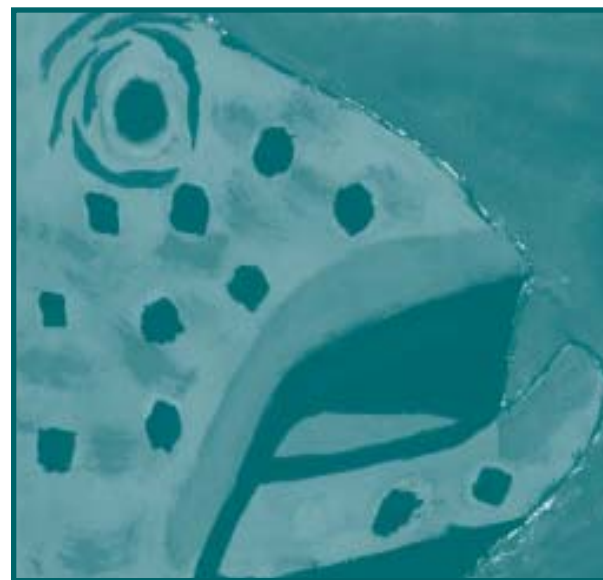
## Develops Children's Self-Confidence

“For children, what we call ‘ennoblement of daily life’ is really important,” explains Carol Cole, Director of Children’s Services at Raphael House and Executive Director of Sophia House in West Oakland. “Singing a song, reading stories before bedtime, celebrating festivals, being kind to the person next to you — everyday life is very, very special. It’s the little patterns and rituals of daily life, but it makes all the difference in the life of a child.”

Children need both discipline and caring support to sustain them as they grow. A strong daily structure, focusing on regular meals, study times, and bedtimes, gives children at Raphael House a sense of security. The regular rhythms of the day allow children to anticipate events and people within their environment.

At Raphael House the special needs of each child are addressed. Included are referrals to medical and mental health providers; academic tutoring and school advocacy; art work, music, and plays; swimming, dance, and martial arts lessons; summer camp; birthday, holiday, and cultural celebrations; and exposure to the larger community through trips to museums, parks, theatre performances, and sporting events.

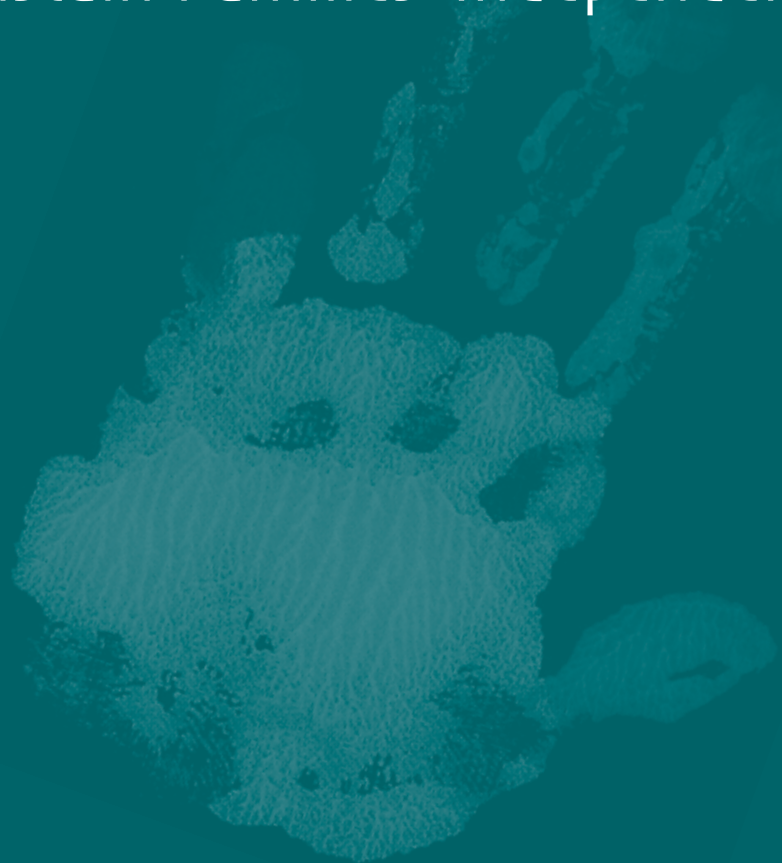
Every Fall we supply children with new backpacks, school supplies and new clothing for school. It helps a child look forward to the school year and feel secure. One child, age seven, wrote a story that begins with her walk to school. “The birds fly so happy in the sky and the sky is blue so blue and the sun is bright. I am on my way to school. I have in my backpack my pencils, my homework, my sharpener, my books, and my eraser and that is in my backpack....”



*Every Fall we supply children with  
new backpacks, school supplies  
and new clothing for school.*

# RELATIONSHIPS

Sustain Families' Independence



The Raphael House AfterCare Program helps families make the transition from the protective shelter environment to independent life. With this network of relationships and support, families are less likely to fall back into homelessness.

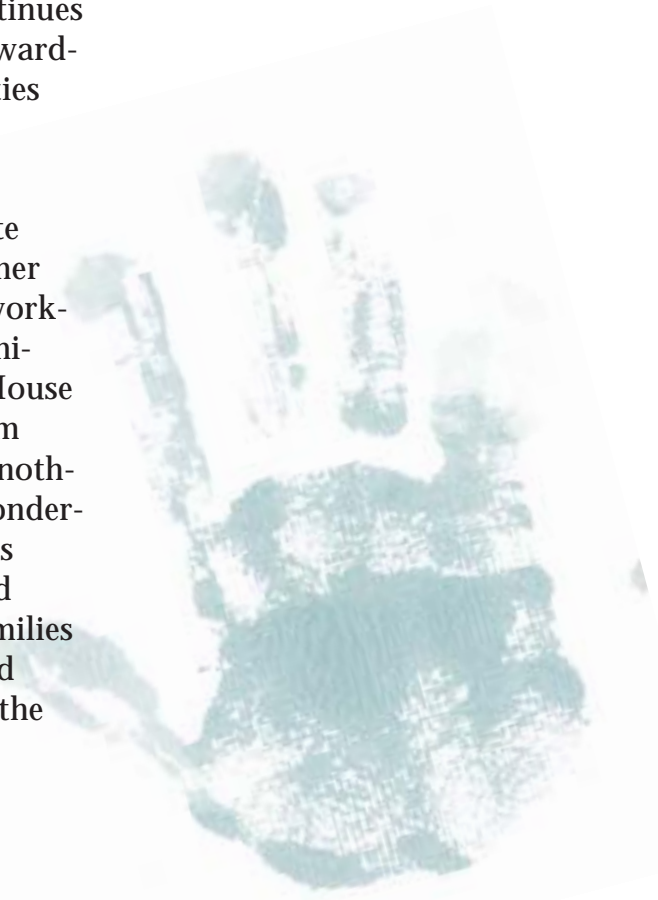
Upon leaving Raphael House, parents are given “starter kits” which might include clothing, housewares, bedding, toys, books, or school supplies. The AfterCare Program also identifies and develops relationships with service providers throughout the Bay Area that are then made available to former residents.

“After working more than fifteen years as a psychiatric nurse, I lost my job,” explains one former resident. “Raphael House was there for me and my daughter. The support we received after leaving was really important — they kept me going. I had people who cared about me, and I was determined to make it work. I am now attending City College, studying for my degree in Child Development.”

Social activities also play a part in building strong and caring relationships with our families. The 4th of July Picnic brings together more than 250 former residents each year. The AfterCare

Open House is held annually, with former residents treated to rooftop games, storytelling, prize drawings, delicious food, and family photos. And the Adopt-A-Family Holiday Program — in which families receive gifts of their choice and holiday food — continues to be one of the most rewarding and successful activities at Raphael House.

“I was impressed when I found out the success rate and heard stories of former residents who are now working and housing their families,” recalls a Raphael House volunteer. “Many of them came from very little or nothing at all. I think it is wonderful that Raphael House is such a great resource and does so much to help families get back on their feet and maintain their homes in the community.”



*The Raphael House AfterCare Program helps families make the transition from the protective shelter environment to independent life.*

*Serving an average of 20 children per day, from both the Residential and AfterCare Programs, the Raphael House After School Program offers short-term protection and care, supervision and reinforcement of school learning, and opportunities to develop supportive and positive relationships.*

# SUPPORT

## Helps Ensure Children's Success

Structured activity during after-school hours is absolutely critical to increase educational achievement as well as prevent involvement in dangerous activities such as drugs, sex, and violence. Serving an average of 20 children per day, from both the Residential and AfterCare Programs, the Raphael House After School Program offers short-term protection and care, supervision and reinforcement of school learning, and opportunities to develop supportive and positive relationships.

With many of our children at least a year behind in school, the After School Program continues to help children get the most from their education. Staff members are in regular contact with the children's teachers — sometimes on a daily basis — in order to ensure that we are working in concert to address any academic and social challenges the children are facing.

The After School Program Coordinator sees all the children's report cards and addresses problem areas.



Each afternoon the program begins with a nutritious small meal where the children sit at a table and learn about manners and appropriate social interactions. After their snack and visiting time, the children help clean up before starting their homework. There is a 4:1 ratio of students to staff/volunteers, and one-on-one tutoring as needed. Children work with the same staff member every day so that a relationship of trust builds over time. After

their homework is completed, there is supervised playtime on the roof playground, a safe place to be a child and to have friends.

“When we first arrived at Raphael House, my son was having a lot of troubles with school. We found out he had a learning disability,” explains one former resident about his son. “At the end of his second year in the After School Program, he won the Most

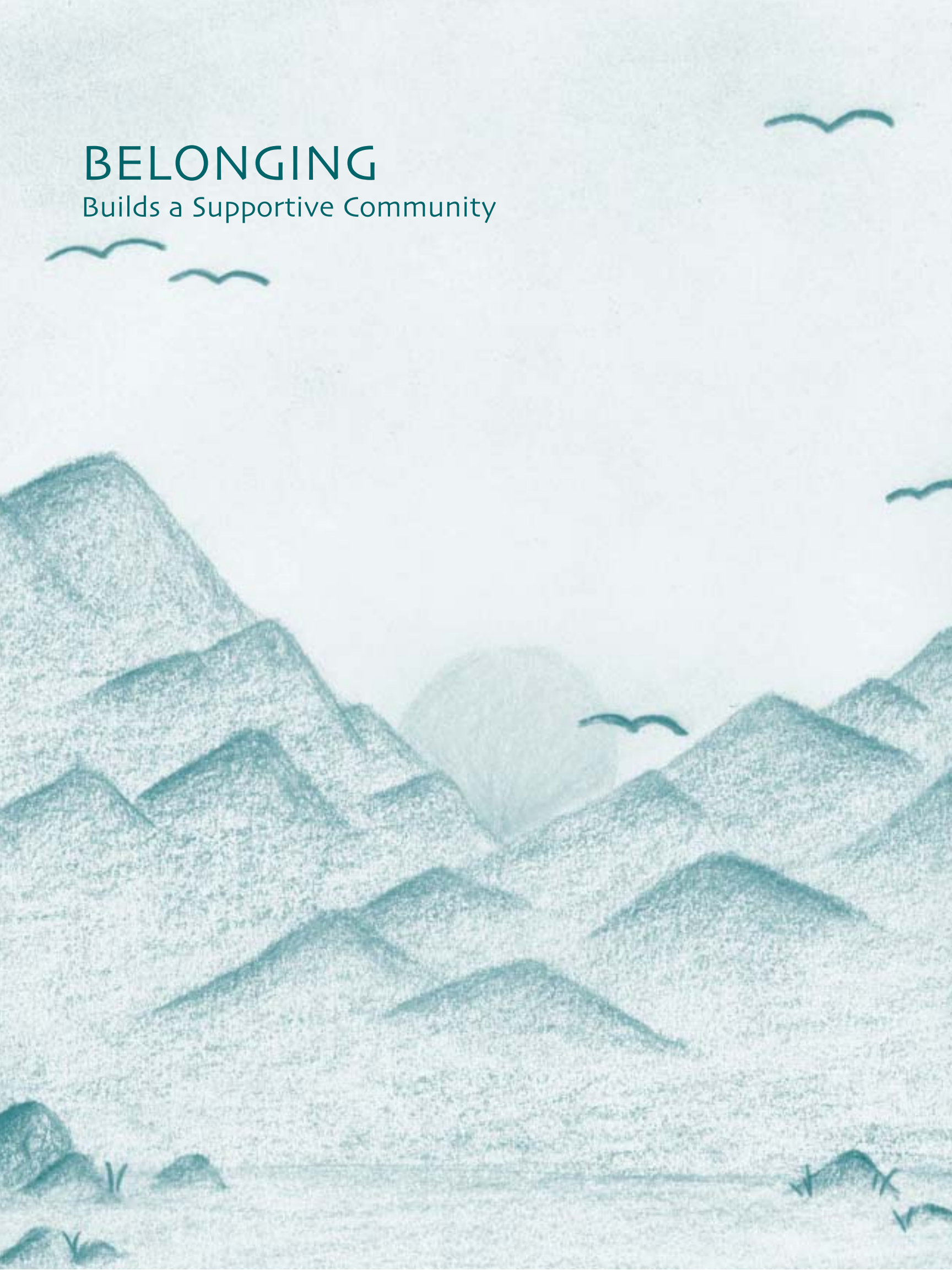
Improved Student Award. And the next year he was helping other kids with math. We are both so proud!”

Along with their scholastic education, Raphael House puts an equal emphasis on the nourishment and support of children’s emotional, conceptual, spiritual, and social development. Our broad mix of activities, including field trips on Saturdays, school holidays, and summer vacations, helps children learn about their relationship to the world and their relationships with others. This helps the children increase their sense of security, their sense of belonging, and their self-esteem.

“I remember when we were on a field trip together,” says one Raphael House mother. “Suddenly my daughter asked, ‘Whose bird is that?’ and one of the staff answered, ‘No-one’s and everyone’s.’ Then my daughter asked, ‘Who is it singing for?’ But before I could reply, she smiled and told me, ‘I know! He is singing for everyone.’”

# BELONGING

Builds a Supportive Community



*“Now I know what it can mean  
to be part of a community.”*

Sophia House is a collaborative project that expands Raphael House services into West Oakland and the East Bay. Sophia House staff provide Day Care, a Before & After School Program, Respite Care, and Family Support to former residents of Raphael House who now live in the East Bay.

Day Care begins at Sophia House as children arrive by 7:00 a.m. weekday mornings. After breakfast, older children leave with staff to walk to school, while their younger siblings begin their activities. They play, bake, paint, sing, dance, draw, listen to stories, tell stories, and help clean up. After a hearty lunch, the children take a nap with their own blankets while a staff member reads a story.

Older children are picked up by Sophia House staff after school and join the younger children at the house. Everyone has a snack and the children talk about their day. Then it is time for homework with tutoring, a story or artistic activity, and outside play. Parents pick up their children around 6:00 p.m.

For all these children, Sophia House is making a tremendous difference in their lives. Regular attendance at school, nutritious food, daily help with homework, supported parental participation at school, and needed school

supplies has meant improved schoolwork and a positive school experience. While it may begin as a struggle to establish a daily routine, that routine gives children a sense of belonging and order.

Every other weekend, children can spend the weekend at Sophia House so that their parents get a break and have the opportunity to work on other areas in their lives. For example, one mother was able to take classes to become a certified nursing assistant. In addition to Respite Care provided at Sophia House, Raphael House offered her transportation costs, book fees, and tutoring three times a week.

“Everyone is helping. We do it together,” said this mother at one of her tutoring sessions. “Now I know what it can mean to be part of a community.” And everyone rejoiced together as a community when she passed her nursing exam.

Sophia House opened its doors in May 2000 and was incorporated separately from Raphael House. Program costs were integrated into the Raphael House budget during the start-up period, and Carol Cole continues to divide her time between the two programs.

# SHARING

## Improves All Our Lives

Raphael House is blessed with more than 1,200 generous and caring volunteers who help make our programs so successful. Volunteers assist in every aspect of Raphael House daily life, as well as helping with special events and projects.

Volunteers participate in collecting and delivering fresh food to our kitchen, tutoring children and parents, serving on Board and Gala Benefit committees, and working at the Raphael House Thrift Store. The Store not only offers our volunteers a unique experience, but it provides a mechanism through which the community can donate clothing, books, toys, and household goods and furnishings. These items are then made available to Raphael House families, or are sold and provide income for all our programs.

Cooking and serving dinner is another everyday task, but it has evolved into one of our most successful volunteer efforts: the Corporate Chefs Program. Five employees from a company volunteer to cook dinner one night for the families living at Raphael House. The Corporate Chefs Program is so popular, we now have chefs from hotels, churches, synagogues, student groups, and civic organizations.

Special events and projects that rely on volunteers include our annual Gala Benefit, our Fall Open House, our annual "Day of Beauty," and our Adopt-A-Family Christmas Program. Our three Thanksgiving dinners and the Christmas brunch we serve to neighborhood seniors are prepared and served by local volunteers, who also do the dishes. And volunteers love to give their time and talents to creating very special birthday celebrations at Raphael House!



## CORPORATE CHEFS 2002 – 2004

Advent Software  
B.E.A. Systems  
The Capital Group Companies  
Catholic Healthcare West  
Charles Schwab and Company, Inc.  
City College Writing Project students  
Convent of the Sacred Heart  
D.F.S. Group Limited  
E-Luxury  
E-Trade  
Fremont Hospital  
Future Networks  
The Gap  
Greek Orthodox Church of the Annunciation  
The Hilton San Francisco  
Hyatt Fisherman's Wharf  
Insurance Industry Charitable Fund  
Ketchum  
Kiwanis Club of San Francisco  
Leadership San Francisco  
Neuberger and Berman Management  
Partech International  
Pottery Barn  
Publicis  
"Realbreak" Orthodox Christian Fellowship  
St. John of God Catholic Church  
St. Mary the Virgin Episcopal Church  
Salesforce.com  
San Francisco Trial Lawyers Association  
Sephora  
Superior Coffee  
The Waldorf High School

While our volunteers help Raphael House programs in many different ways, they all have one thing in common: sharing their lives to help improve the lives of others. These wonderful men and women bring a warmth and caring that is felt by everyone here.

By helping and supporting our residents and former residents, volunteers often find they are helping themselves as well.

“Raphael House is such a warm place, it’s an easy place to volunteer for,” explains Debbie. “The people are nice, and everyone you work for is incredibly grateful. At Raphael House, we have women who have faced so many harsh challenges. Every time I am there, I realize how fortunate I am. I feel I’m volunteering more for me than for them. I get more out of it than they will ever understand.”

Volunteers are truly part of the Raphael House community, a part of our stable and loving family. By sharing their time and talent, volunteers help create an environment where we can all learn, grow, and thrive.

# Statistics

## Year-End Program Report: August 2002 – July 2003

### People Served

	Unduplicated Totals +	Shelter	AfterCare
Total Individuals	797	119	734
Adults	276	53	248
Children	521	66	486
<b>Total Families</b>	<b>226</b>	<b>41</b>	<b>205</b>
<b>Family composition</b>			
Single mothers	161	30	144
Single fathers	7	1	7
Couple	46	10	42
Other	12	0	12
<b>Original Cause of Homelessness per family</b>			
Domestic violence		18	
Dangerous living situation		1	
Job loss		3	
Asked to move out		6	
Substance abuse		0	
Relocation		9	
Mental illness		0	
Other		4	
<b>Age</b>			
Head of Household			
18-25		10	11
26-40		24	130
41-60		7	64
Children			
0-2		25	41
3-6		21	101
7-10		7	99
11-15		12	128
16-18+		1	117

Average Length of Stay in our Residential Shelter Program:  
142 days

+ If a family moves from shelter to aftercare,  
they are counted only once in totals.

### Sophia House

	# activities	# children	# families
Daycare	157	15	7
Weekend Activities	21	16	7
Respite Care	36	17	8
Meals served to children	3,063		

### Shelter

Bed Nights		
Adults		7,205
Children		9,663
<b>Total</b>		<b>16,868</b>
Meals		
Adults		19,454
Children		26,090
<b>Total</b>		<b>45,544</b>
Family Departures		
Transitional Housing		10
Independent Housing		7
Subsidized housing		4
Asked to leave		4
Left unexpectedly		1
Departures to stable housing:		81%
Volunteer Program		
Venue	# hours	# people
Live-in vol's & interns	10,518	7
Thrift Store	1,596	7
Adopt-a-Family	650	680
Program volunteers	2,003	41
Kitchen & Corp. Chefs	2,790	241
Event volunteers	119	27
Board & committees	1,848	17
Gala Committee	3040	26
Field Trip Volunteers	228	35
"Holy Gleaners"	90	23
Development	120	3
Back to School Supplies	38	15
<b>Total</b>	<b>20,346</b>	<b>1,108</b>

## Year-End Program Report: August 2003 – July 2004

### People Served

	Unduplicated Totals +	Shelter	AfterCare
<b>Total Individuals</b>	818	138	772
Adults	284	62	264
Children	534	76	508
<b>Total Families</b>	248	51	234
<b>Family composition</b>			
Single mothers	197	40	189
Single fathers	8	0	8
Couple	34	10	29
Other	9	1	8
<b>Original Cause of Homelessness per family</b>			
Domestic violence		14	
Dangerous living situation		2	
Job loss		7	
Asked to move out		11	
Substance abuse		3	
Relocation		8	
Mental illness		2	
Other		4	
<b>Age</b>			
<b>Head of Household</b>			
18-25		19	27
26-40		27	108
41-60		5	99
<b>Children</b>			
0-2		30	43
3-6		22	89
7-10		13	119
11-15		10	153
16-18+		1	104

**Average Length of Stay in our Residential Shelter Program:  
133 days**

+ If a family moves from shelter to aftercare,  
they are counted only once in totals.

### Sophia House

	# activities	# children	# families
Daycare	200	15	9
Weekend Activities	10	12	6
Respite Care	36	26	11
Before and After School Care	200	6	4
Meals served to children	6,130		

### Shelter

#### Bed Nights

Adults	6,055
Children	6,640
<b>Total</b>	<b>12,695</b>

#### Meals

Adults	16,348
Children	17,928
<b>Total</b>	<b>34,276</b>

#### Family Departures

Transitional Housing	9
Independent Housing	13
Subsidized housing	7
Asked to leave	4
Left unexpectedly	2
<b>Departures to stable housing:</b>	<b>83%</b>

#### Volunteer Program

Venue	# hours	# people
Live-in vol's & interns	5,955	7
Thrift Store	1,596	7
Adopt-a-Family	650	680
Program volunteers	2,557	95
Kitchen & Corp. Chefs	3,140	350
Event volunteers	399	134
Board & committees	1,848	17
Gala Committee	560	26
Field Trip Volunteers	90	35
"Holy Gleaners"	224	23
Development	120	3
<b>Total</b>	<b>17,139</b>	<b>1,377</b>

# Financials

## Income and Expense Statement

August 1, 2002 – July 31, 2003

<b>INCOME</b>	
<b>Contributions, Gifts, Grants</b>	
Individual Donations	\$ 689,092
Corporations and Businesses	155,032
Churches and Civic Groups	23,142
Foundation Grants	496,335
Trusts and Estates	48,550
Special Events	174,978
Total Contributions	\$ 1,587,129
<b>Other Revenues</b>	
Thrift Store Sales Proceeds	\$ 120,552
Program Fees	18,585
Interest Income	4,229
Miscellaneous Income	802
Total Other Revenues	\$ 144,168
Total Cash Receipts	\$ 1,731,297
<b>EXPENSES</b>	
<b>Staff Expenses</b>	
Salaries and Wages	\$ 831,410
Employer Costs	112,882
Employee Benefits	101,719
Contracted Services	-0-
Total Staff Expenses	\$ 1,046,011
<b>Other Expenses</b>	
Sophia Project	\$ 116,628
Children's Activities/Education	47,493
Adult Activities/Education	11,006
Direct Aid to Individuals	43,640
Food	61,620
Occupancy Costs (1045, 1047, 1051, 1065 Sutter St.)	68,154
Staff Education	1,864
Volunteer Coordination	11,795
Furniture and Equipment	27,123
Supplies	37,325
Postage and Shipping	20,071
Transportation/Vehicle Insurance	40,366
Telephone	17,905
Printing, Copying, Publications	44,946
Development Expense	70,185
Administrative Expense	52,267
Total Other Expenses	\$ 672,388
Total Cash Disbursements	\$ 1,718,399
Cash Increase (Decrease)	\$ 12,898

## Income and Expense Statement\*

August 1, 2003 – July 31, 2004

<b>INCOME</b>	
<b>Contributions, Gifts, Grants</b>	
Individual Donations	\$ 723,718
Corporations and Businesses	119,512
Churches and Civic Groups	133,871
Foundation Grants	440,833
Trusts and Estates	64,070
Special Events	267,935
Total Contributions	\$ 1,749,939
<b>Other Revenues</b>	
Thrift Store Sales Proceeds	\$ 122,428
Program Fees	11,548
Interest Income	2,549
Miscellaneous Income	(414)
Total Other Revenues	\$ 136,111
Total Cash Receipts	\$ 1,886,050
<b>EXPENSES</b>	
<b>Staff Expenses</b>	
Salaries and Wages	\$ 830,772
Employer Costs	133,228
Employee Benefits	134,420
Contracted Services	8,390
Total Staff Expenses	\$ 1,106,810
<b>Other Expenses</b>	
Sophia Project	\$ 116,628
Children's Activities/Education	51,358
Adult Activities/Education	9,000
Direct Aid to Individuals	49,463
Food	62,361
Occupancy Costs (1045, 1047, 1051, 1065 Sutter St.)	80,535
Staff Education	3,197
Volunteer Coordination	17,663
Furniture and Equipment	28,114
Supplies	35,175
Postage and Shipping	12,095
Transportation/Vehicle Insurance	26,538
Telephone	18,301
Printing, Copying, Publications	28,656
Development Expense	81,930
Administrative Expense	48,347
Total Other Expenses	\$ 669,361
Total Cash Disbursements	\$ 1,776,171
Cash Increase (Decrease)	\$ 109,879

\* These figures represent income and expense on a modified cash basis, and are unaudited at the time of this printing. Our annual audited financial statement will be prepared by an outside accountant on the accrual basis, and are available upon request.



# Raphael House Staff & Live In Volunteers a labor of love...

## **Raphael House Staff\*\*** **August 1, 2002 – July 31, 2004**

Angela Alessandroni  
Monica Aggson  
Randa Aoun  
Carmela Biggs  
Alessandro Bresba  
(Jesuit Volunteer)  
Samantha Caine  
Kala Ciletti  
Christopher Conlogue  
Kathleen Conlogue  
Veronica Cooke  
Augusta Del Zotto  
Ralitza Doynova  
Lucia Dugliss  
Jan England  
Michael Ennis  
Adriana Enriquez  
Carol Field  
Olivia Garcia  
Alex Guadarrama  
Sue Hans  
Richard Herwitt  
Vanessa Leite,  
(Mennonite Volunteer)  
Fr. David Lowell  
Elaine Lowell  
Joanna Mannion  
Katrina Nance  
Maria Nash  
Anastasia Novikova  
Elena Novikova  
Jo Ellen Peterson  
Gordon Phillips

Amilcar Pina  
Nancy Rios  
Inga Rosenau  
(Mennonite Volunteer)  
Sophia Runyan  
Jennifer Schott  
Olga Shkouro  
Janet Sidingier  
John Simmons  
Peter Taibbi  
Heather Van Atta  
Maria Vasquez  
Jenna Ward  
Sarah Watermulder  
Darlene Williams  
Peter Wright

## **Raphael House Live-In Volunteers**

Athina Alexandrou  
George Donnor  
Rachel Dombowsky  
Robert Downs  
Jacqueline Flower  
Naomi Funk  
Alexandra Green  
Esther Gurt  
Sarah Gurt  
Delia Mihalca Haddad  
Moussa Haddad  
Eric Iliff  
Cliff Klemans  
Rose Trautmann  
Amanda Walker

## **Real Break 2004 \***

Fr. Michael Nasser  
Laura Bucila  
Michael Ciavaglia  
Amanda Elsabee  
Chris Fahlbeck  
Lucie Hall  
John K. Miller

## **Real Break 2003 \***

Fr. George Dokos  
Heidi Funk  
Bradley Hoff  
Philothei Maria Papas  
Phillip Christopher Rogers  
Joshua Wiley Smith  
Steve Zabak

**\*Real Break**—Every Spring college students in the Orthodox Christian Fellowship use their spring break to volunteer at Raphael House

**\*\*Full and Part Time**

# Donor List



## HONOR ROLL

August 1, 2002 – July 31, 2004

### PHILANTHROPISTS

\$50,000.00+

Mr. Bruce Colman  
Estate of Gloria Hubner  
The Wolf Family Fund

### PATRONS

\$25,000.00+

Anonymous  
Danielle and Jon Mewes  
John and Paula Murphy  
Estate of Florence Sorensen  
Mr. and Mrs. Lawrence Stupski  
Mrs. Bernard E. Witkin

### BENEFACTORS

\$10,000.00+

Mr. and Mrs. Michael Balog  
Ms. Judith A. Binsacca  
Anonymous  
Ms. Ruth M. Collins  
Ms. Susan DiJohnson and  
Mr. Henry Hodes  
Estate of Farrar R. Dodge  
Mr. and Mrs. L. John Doerr III  
Mr. and Mrs. Daniel Flamen  
Mr. and Mrs.  
Richard A. Goodrich  
Ms. Barbara S. Hager  
Mrs. Eileen H. Hinkson  
Zem and James Joaquin  
Gordon and Clare Johnson  
Charitable Annuity Trust  
Ms. Karen Keeney  
Mr. and Mrs.  
Michael S. Laflamme  
Mr. and Mrs. John D. Leland, Jr.  
Karen and John McGuinn  
Mrs. Sabel Meyer  
Mr. and Mrs.  
Stephen L. Millham  
Mr. Stanley I. Morrical  
Mr. Frank R. Rosenbach

### GUARDIANS

\$5,000.00+

Anonymous  
Mr. Eugene C. Anderson  
and Ms. Katarina Stenstedt  
Ms. Jane A. Anderson  
Mr. and Mrs.  
Robert W. Andrews  
Ms. Margaret L. Barkley  
Estate of Elizabeth C. Bernt  
Susannah and Carl Bettag  
Mr. David Bromwell  
Mr. and Mrs. Donn H. Byrne, Jr.  
Ms. Julie E. Chaiken and  
Mr. Scott Grigsby  
Ms. M. Kathryn Clubb and  
Ms. Linda Reid  
Mr. Michael R. Ennis  
Julia and Pat Garvey  
Mr. and Mrs. Keith B. Geeslin  
Carmel and Eric Greenberg  
Mr. Francisco Gutierrez  
William Hancock Family Fund  
Ms. Joanne C. Heffelfinger  
John and Charmaine Hinman  
Mr. and Mrs. Clarke Holland  
Mr. and Mrs. Harold M. Isbell  
Dr. and Mrs. Howard S. Jaffe  
Mr. and Mrs. Philip M. Jelley  
Mr. Elliot Katz and  
Ms. Teri Nishikawa  
Mr. and Mrs.  
Richard H. Kimball  
Mr. and Mrs.  
Edward V. Lewandowski  
Ms. Barbara Malina and  
Mr. Scott Wachter  
The Meyer and Friedman Fund  
Ms. Carol J. Olwell  
Jo Ellen and John Peterson  
Mr. and Mrs. Jeffrey E. Pettit  
Mr. and Mrs. David A. Rickert

Mr. Thomas D. Root  
Ms. Sarah M. Shaw and  
Mr. Robert Strawbridge  
Mr. and Mrs. Bryon T. Sheets  
Elinor Smith Charitable Trust  
Mr. Oliver D. Ward  
Anne Maria and Paul Wattis  
Mr. and Mrs. A. Lee Zeigler

### SPONSORS

\$1,000.00+

Dr. and Mrs. Joseph S. Alam  
Mr. Thomas Allen and  
Ms. Beth Levison  
Ms. Evi Altschuler  
Ms. Katharine D. Anderson  
Mr. and Mrs. Arthur Ang, Jr.  
Mr. Leo M. Anthenien  
Ms. Katherine L. Armstrong  
Mr. and Mrs. John B. Arnold  
Ms. Jean J. Ashley  
Mr. and Mrs. Joseph M. Baker  
The Rev. Browne Barr  
Mr. David Barr and  
Ms. Lynne McDonald  
Mr. and Mrs. Joseph H. Battin  
Mr. and Mrs. Walter C. Bell  
Ms. Cassandra Benjamin  
Mr. Michael Bentivoglio and  
Ms. Deborah Dasovich  
Mr. Anthony Bernhardt and  
Ms. Lynn Feintech  
Mr. Peter Bertrand  
Mr. and Mrs. Mark Bewsher  
Estate of David P. Bissell  
Mr. Philip D. Black and  
Ms. Bridgitte L. Sandquist  
Ms. Diane L. Blackwelder  
Ms. Phyllis B. Blair  
Estate of Betty B. Bosc  
Ms. Sherry Boschert and  
Dr. Meg D. Newman

## HONOR ROLL, CONT'D

### SPONSORS, CONT'D

Ms. Arlene L. Boyd  
Ms. Kristin Bradbury and  
Mr. Eric Davison  
Mr. William A. Brandt, Jr.  
Diana and Mkulima Britt  
Mr. and Mrs. Ralph H. Britton, Jr.  
Mr. and Mrs. Steven D. Brooks  
Mr. David R. Bryant  
Mr. and Mrs. Kent P. Buckles  
Mr. Brian R. Bunch and  
Ms. Tara Trask  
Wendy and Peter Bunch  
Ms. Jeanne C. Burbank  
Mr. and Mrs. Rod Burns  
Ms. Sheila O. Burns  
Peggy and Richard Burrows  
Mr. John Caldwell  
Miss Frances Campra  
Mr. and Mrs.  
Lawrence J. Canepa  
Mr. Gregory S. Carrasco  
Ms. Grace Carter  
Mr. and Mrs.  
Edmund W. Cavagnaro  
Harry and Janet Chapman  
Ms. Deirdre A. Cherry  
Mr. Harry R. Chesley  
Mr. Thomas D. Childers  
Ms. Christin Chorak  
Ms. Andrea L. Clay  
Ms. Hanna R. Clements-Hart  
and Mr. Reece K. Hart  
M. David Cohen, MD  
Mr. Michael L. Collins  
Dr. David L. Conant and  
Dr. Rebecca E. Conant  
Mr. and Mrs.  
Robert C. Condon  
Mr. Thomas B. Cook and  
Ms. Anna Owens  
Mr. and Mrs.  
Stephen A. Cowan  
Ms. Rose M. Coyle  
The Rev. and Mrs.  
Norman Cram  
Ms. Cynthia Cummins and  
Mr. Paul Hurley  
Mr. and Mrs. Paul Curthoys  
Victoria and Rick Dade  
Delphine and Allen Damon  
Mr. and Mrs. Robert L. Davis  
Mr. J. Hallam Dawson and  
Dr. Mary McVey  
Anonymous  
Ms. Ludell Deutscher  
Mr. and Mrs. David B. Devine  
Mr. Robert J. Diaz  
Ms. Patricia Swig Dinner  
Mr. and Mrs. Christos Diplas  
Mrs. Mary Lou Dorking  
Mr. William Downing and  
Ms. Mary Bachman  
Mr. and Mrs. Daniel L. Drake  
Mr. and Mrs. Harold J. Dubay  
Lucia and Roderick Dugliss  
Mr. and Mrs. Mark Dunaway  
Mr. Dan Durazo  
Ms. Joan C. Eckart  
Mr. Barry Eggers  
Mr. George Ehinger  
Mr. Jon P. Ehlen  
Christine and Matt Elders  
Mr. and Mrs.  
Douglas J. Engmann  
In Memory of Jeanne R. Ennis  
Anonymous  
Mr. and Mrs. Seth P. Ferguson  
Ms. Carol L. Field  
Mr. and Mrs. William S. Fisher  
Christophe and  
Josephine Franklin  
Mr. and Mrs. Richard Fried  
Mr. and Mrs. Robert C. Friese  
Mr. Steven Fugaro  
Ms. Andrea Fulton  
Mr. and Mrs. Daniel Gelbaum  
Mr. Mark Gerson  
Mr. and Mrs. Anthony C. Gilbert  
Ms. Julie A. Gilman and  
Mr. Joe Veronese  
Mr. David Goldstein and  
Ms. Julia Vetromile  
Mr. Fred M. Grafton  
Mr. Luther Greulich  
Mr. and Mrs. Edward D. Haas  
Mr. and Mrs. Peter Haas, Jr.  
Mr. and Mrs. Lloyd O. Haefner  
Mr. and Mrs. Peter V. Hall  
Ms. Amanda M. Hamilton  
Ms. Sarah J. Hammann  
Mr. and Mrs.  
W. James Hannon, Jr.  
Ms. Anette Harris  
Mr. and Mrs. Mark E. Harris  
Mr. Vincent E. Harris  
Mr. Desmond Hayes  
Maj. Gen. and Mrs.  
Thomas J. Hayes  
Mr. and Mrs. W. R. Hearst, III  
Ms. Ann S. Hedges  
Dr. Christine L. Hejinian  
Mr. and Mrs. E. David Hetz  
Mrs. Rosemary B. Hewlett  
Ms. Terri Holbrook  
Ms. Sheila A. Holtgrieve  
The Honorable James C. Hormel  
Ms. Connie Horn  
Ms. Maggie Jacobs  
Ms. Jill B. Jardine  
Laurie and Arthur Javier  
Ms. Carol Crandall Jensen  
Mr. Coale Johnson  
Dr. and Mrs. George Kalousek  
Mr. Isaac Kaplan  
Ms. Sharon F. Karol  
Mr. James Karr  
Mr. and Mrs. Martin Katz  
Peter and Nancy Keane  
Ms. Hilary Swift Keith  
Ms. Mary J. Kelly  
Mr. and Mrs. Charles Kenady  
Ms. Josephine Kennedy  
Mr. and Mrs. Marvin E. Key  
Mr. and Mrs. Donald Khouri, II  
Mr. Paul L. King

## HONOR ROLL, CONT'D

### SPONSORS, CONT'D

Estate of Eve V. Koch  
Ms. Barbara Korp  
Ms. Jane S. Kumin  
Mr. Wade Langill and  
Ms. Lynda Carroll  
Ms. Lynn Lannon  
Mr. and Mrs. John M. Latta  
Ms. Mary Lavine  
Mr. Russell M. Leiman  
Mr. and Mrs. Herbert Liberman  
Ms. Dorothy A. Lloyd  
Mr. Thomas O. Loeb  
Ms. Kathleen A. Long  
Mr. Mark X. Loughran  
Fr. and Mrs. David Lowell  
Mr. James M. Lundy  
Mr. and Mrs. Martin B. Madsen  
Mr. and Mrs. Peter V. Maio  
Ms. Janice Maloney and  
Mr. Douglas Camplejohn  
Mr. Peter L. Mangione and  
Ms. Margaret M. Sabo  
Mrs. Elizabeth M. Manoyan  
Mr. and Mrs.  
Thomas A. Marlow II  
Mr. Thomas McConnell and  
Ms. Latricia Turner  
Ruthanne and Donald McCunn  
Ms. K. Ira McEvoy  
Ms. Nan Tucker McEvoy  
Mr. and Mrs. James F. McKee  
Mr. and Mrs. Wolfgang Meier  
Mr. Daniel J. Melvin  
Ms. Ann W. Merrill  
Mr. Daniel Meyerson  
Ms. Marion G. Miles  
Mrs. Diane Miller  
Dr. Nancy Milliken  
Mr. and Mrs. Conrad Milner  
Ms. Mozghan Mizban and  
Mr. Steve D'Ambra  
Mr. George R. Monds  
Mr. and Mrs. Stephen P. Moore  
Mr. and Mrs. John Morgridge  
Ms. Kathleen Navarra  
Mr. Terry Nelson  
David and Katharine Newhouse  
Mr. and Mrs. Charles O'Brien  
Mr. and Mrs. William D. O'Brien  
Mr. and Mrs. Robert G. O'Donnell  
Mr. and Mrs. Donald D. O'Neal  
Ms. Rudell O'Neal  
Ms. Carole A. Obley  
Ms. Michelle M. Odom  
Mr. Andre Paez  
Mr. and Mrs. Michael Parish  
Colette Weil and Jim Parrinello  
Natalie and Adrian Pasdar  
Ms. Lorraine Pehoushek  
Mr. and Mrs. David A. Pell  
Mr. and Mrs. George R. Perches  
Nicole and Tony Perkins  
Mr. and Mrs. James L. Peters  
Mr. and Mrs. Todd K. Petracek  
Mr. and Mrs. Tikhon S. Pichai  
Mr. and Mrs. Charles C. Pironi  
Ms. Helen Pittman  
Mr. Harry Plant  
William and Carol Price  
Mr. William Primozic  
Mr. and Mrs. C. Bradley Prodger  
Dr. and Mrs. Glenn Puder  
Ms. Lori J. Purvis  
Jim and Kelly Rakos  
Joe and Christine Ramos  
Mr. and Mrs. Philip D. Reed, III  
Ms. Mary E. Reilley and  
Mr. James C. Krieg  
Ms. Judith Eileen Reuter  
In Memory of Jerry Richardson  
Ms. Ray Riess  
Mr. and Mrs. Grover P. Righter  
Mr. William T. Robbins  
Hal John Robinson  
Ms. Kris Rockwell and  
Ms. Laura Touw  
Ms. Lorelei Rockwell  
Anonymous  
Ms. Karen C. Ross and  
Dr. Joel Ross  
Claudia and Keith Ross  
Ms. Angela P. Rubin  
Mrs. Jena B. Ruhland  
Linda and Stephen Russell  
Mr. Robert W. Ruth  
Ms. Sarah L. Ryan  
Ms. Debra J. Saunders and  
Mr. Wesley J. Smith  
Beth and David Sawi  
Dr. Samuel Scarlett  
Mr. Thomas J. Scharffenberger  
and Ms. C. Victoria Simonds  
Ms. Andrea Schnitzer  
Mr. and Mrs. E. Laurence Schott  
Mr. and Mrs. N.W. Schurhoff  
Mr. Eric A. Schwartz  
Mr. Kevin W. Sea  
Anonymous —  
For The Buddy Fund  
Mr. and Mrs. Philip Selby  
Mr. and Mrs. Don Selsor  
Ms. Margaret V. Sheehan  
Ms. Mary T. Sheehan  
Ms. Susan V. Siefkas  
Mr. and Mrs. Paul V. Simpson  
Ms. Uma Sinha  
Mr. Steven J. Smith  
Ted and Kate Smith  
Mr. Richard Spelker and  
Ms. Ruth Gaube  
Ms. Jean Starek  
William and Lynn Starr  
Mr. and Mrs. Charles Stedwell  
Mr. and Mrs. David Steinberg  
Mr. and Mrs. Erik Stenstedt  
Estate of James W. Sternberg  
Mr. and Mrs. Ralph Stiewe  
Mr. Bernard Stolar and  
Ms. Lynn A. Dalton  
Ms. Sandra L. Stumbaugh  
Mr. Darryl J. Sudduth  
Laura and A.J. Summers  
Mr. and Mrs. David Swartz  
Mr. Peter Taibbi  
Ms. Jennie Tan  
Mr. and Mrs. Carter P. Thacher

## HONOR ROLL, CONT'D

### SPONSORS, CONT'D

Mr. Lance Thomson  
Mr. Roger Trincherro  
Miss Esther J. Truman  
Mr. and Mrs. Eugene L. Valla  
Ms. Sarah Van Ness  
Mr. Louis A. Vasquez  
Mrs. Veronica Veal-Hudson  
and Mr. Charles Hudson  
Mr. Brian Veit and  
Ms. Catherine Ryan  
Mr. Daniel G. Volkmann, Jr.  
Mr. Albert W. Wald  
Mr. and Mrs. John H. Ware  
Vera and Michael Wasacz  
Ms. Anne E. Waters  
Mr. Tony Weinress and  
Ms. Chris Kelly  
Mr. Paul Wermer and  
Ms. Carol Brownson  
Joan R. Wheelwright, M.D.  
Christopher and Susan Wilkens  
Ms. Eva J. Williams  
Ms. Charlotte M. Williamson  
Ms. Clare G. Willis  
Mr. and Mrs. Thomas A. Wilson  
The Wintersteen Family Fund  
of the Marin Community  
Foundation  
Jeffrey and Jo-Lee Wishner  
Mr. and Mrs. Michael R. Wolfe  
Ms. Mary Wriedt  
Ms. Catherine Wright and  
Mr. James Wunderlich  
Mrs. Constance B. Wright  
Mr. and Mrs. Loring A. Wyllie  
Mr. and Mrs. John L. Wytman  
Mr. and Mrs. Brad M. Yandell  
Ms. Nicole Young  
Mr. and Mrs. Robert L. Young  
Mr. Paul Zaentz  
Ms. Jody A. Zaitlin  
Mr. and Mrs. Chris C. Zamolo  
Ms. Alanna Zrimsek and  
Mr. Morton Levin

### SUSTAINERS

\$500.00+  
Ms. Tilly Abbe  
Fr. and Mrs. Tom Alessandroni  
Mr. Douglas P. Allen  
Mr. and Mrs. Robert A. Anderson  
Ms. Christine Angeles and  
Mr. Steven R. Cady  
Ms. Neva Jean Appleton  
Jennifer and Thomas Armstrong  
Mr. and Mrs. Stephen S. Ashley  
Mr. James Balestreri  
Mr. Richard C. Barker  
Mr. and Mrs. Jeffrey S. Barnes  
Mr. Ray Barnes  
Ms. Georgette Beainy  
Carol J. and Richard Bee  
Ms. Shirley A. Beers  
Ms. Felicia M. Betancourt  
Mr. and Mrs. Michael Bevans  
Estate of Theresa Beal Bice  
Mr. and Mrs. Robert C. Bingham  
James B. Blume and Kathryn  
W. Frank Fund of the Tides  
Foundation  
Mr. and Mrs. Steven Borden  
Ms. Samantha Bovich  
Ms. Amy H. Bowers  
Mr. Kevin M. Brennan  
Ms. Nathalie Brophy  
Ms. Denise H. Brown II  
Mr. and Mrs. Barry Brynjulson  
Mr. Christopher Buchbinder  
Ms. Linda Burden  
Mr. Stephen C. Burger and  
Ms. Deborah Woo  
Mr. and Mrs. Kevin Burrell  
Ms. Elizabeth J. Cabraser  
Ms. Mary Louise Caetta  
Miss Mary I. Callanan  
Ms. Kim E. Card  
Ms. Cynthia A. Carstensen  
and Ms. Julia Vax  
Mr. Jorge Castillo  
Mr. and Mrs. Park Chamberlain  
Ms. Mahin Heidary Charles  
Ms. Stephanie Chew  
Ms. Alys Christianson  
Ms. Jamie Chung and  
Mr. Curtis Smith

Ms. Sarah Churchill  
Ms. Allyson Clark and  
Mr. Dennis R. Winingger  
Mr. Edward M. Cohen  
Mr. Ronald J. Cohen  
Ms. Katherine E. Coleman  
Ms. Tamara Colorado  
Ms. Lenore Conroy  
Ms. Veronica C. Cooke  
Mr. Armon Cooper and  
Ms. Karen Schoenberg  
Mr. Thomas F. Coyne  
Ms. Belinda S. Craig  
Ms. Constance Cummings  
Mr. and Mrs. Robert Cushman  
Ms. Charlene A. Dailey  
Mr. and Mrs.  
Richard R. Dalmazzi  
Ms. Lynn Davidian  
Mr. and Mrs. Gale Davis  
Mr. Matthew D. Davis  
Ms. Shirley D. Davis  
Mr. and Mrs. Anthony Delgado  
Mr. Andres J. Diaz  
Mr. and Mrs. Theodore Dimitre  
Mr. and Mrs. Harold Dittmer  
Anonymous  
Mr. Steve Jamison Edstrom  
Mr. and Mrs. Mark S. Emerson  
Mr. Keith Emrick  
Mr. Patrick C. Endaya  
Mr. and Mrs.  
Christian P. Erdman  
Mrs. Elizabeth A. Erickson  
Dr. James W. Evans  
Mr. Kyle Everett and  
Ms. Janet Nolan  
Mr. and Mrs. Richard A. Falk  
Farese Family Foundation  
Mr. and Mrs. Morley Farquar  
Ms. Darla Ferreira  
Mr. and Mrs. James K. Finch  
Ms. Leslie Fine  
Mr. and Mrs.  
Michael P. Flanagan  
Mr. Timothy J. Flinn  
Mr. Jeffrey D. Foote  
Mr. and Mrs. Thomas W. Foote  
Ms. Dorothy H. Fowler

## HONOR ROLL, CONT'D

### SUSTAINERS , CONT'D

Ms. Deborah G. Frangquist  
Ms. Ursula S. Gan  
Ms. Linda E. Gayle  
Estate of Agnes L. Geary  
Ms. Irene Gianoutsos  
Mr. Thomas Gibbons  
Mr. and Mrs. Barrett L. Giorgis  
Mr. and Mrs. Michael Giuntoli  
Ms. Linda E. Gladstone  
Ms. Rosemary Glavin  
Mr. and Mrs. John M. Gleason  
Mr. and Mrs. Steven Goldby  
Dr. Michael E. Goodhart and  
Dr. Susan Hoppe  
Ms. Bea Goop-Lott  
Ms. Catherine Graeber  
Ms. Susan Green and  
Mr. David Thompson  
Mr. Roger Greer and  
Ms. Constance Moore  
Ms. Susan E. Gregory  
Troy and Angelique Griep  
Mr. and Mrs.  
Thomas M. Groeninger  
Mrs. Leslie R. Guggenheim  
Mr. and Mrs. Scott P. Gutterman  
Mr. and Mrs. James Hager  
Mr. C. S. Hall  
Peter and Harriet Hanauer  
Ms. Heather R. Hanly and  
Mr. Daniel Purcell  
Miss Barbara E. Harms  
Mr. Doyle Heaton  
Dr. Joan Heffelfinger and  
Mr. Carey Chenoweth  
Mr. and Mrs. Robert D. Heller  
Mr. and Mrs.  
Jeffrey B. Henriques, Jr.  
Mr. Numael D. Hernandez  
Mr. Jeff Herrera  
Ms. Susan I. Herzig  
Mr. and Mrs. Wayne S. Hill  
Mrs. Elaine A. Hilp  
Ms. Dale Hirsch  
Mr. and Mrs. Jerome Hosken  
Mrs. Mary Jane Huff  
Ms. Silvia Hughes  
Mr. and Mrs. George Hume  
Mr. and Mrs. Christopher Hunt  
Mr. and Mrs. Robert E. Hunter, Jr.  
Ms. Becka C. Hydorn  
Stephen and Karen Jaber  
Mr. and Mrs. Bradford Jeffries  
Mr. Allan Day Jergesen  
Mr. Brice C. Jones  
Stephen and Katherine Jones  
Ms. Laura V. Jorgensen  
Mr. Stanley H. Judd  
Ms. Angela L. Kalousek  
Ms. Carole S. Kaplan  
Mr. Sherman Kassof  
Mr. Carl M. Kawaja  
Mr. and Mrs. Ed Kaylor  
Marilyn and Dan Kelso  
Ms. Regina Khalili  
Mr. Frank L. Kidner  
Mr. and Mrs. James Klingbeil  
Ms. Dorothy F. Knecht  
Ms. Nancy L. Kokolj  
Ms. Carole R. Kornblum  
Ms. Adrienne Krug and  
Ms. Molly Tyson  
Mr. and Mrs. Thomas M. Kunz  
Ms. Connie D. Laitinen  
Thomas and Sarah Langdon  
Mr. Craig Larsen  
Mr. Michael Larsen and  
Ms. Elizabeth Pomada  
Mr. and Mrs. Glen Lau  
Ms. Mary Patricia Lavin  
Mr. and Mrs. Richard E. Laws  
Dr. and Mrs. Richard E. Leeds  
Mr. and Mrs. Walter R. Lembi  
Norman and Florence Lind  
Mrs. Frank Lindskoog  
Mr. John Link, Jr.  
Ms. Carrie J. Livermore  
Ms. Kathryn Luhe  
Martin and Rosalina Lydster  
Ms. Theresa Machi  
Mr. and Mrs.  
Ronald H. Mackintosh  
Mr. and Mrs.  
Sherman J. Maisel  
Ms. Heather Major  
Mr. and Mrs. Robert C. Master  
Mr. and Mrs. George Matar  
Ms. Heather A. McCaffrey  
Michael and Kristen McCarthy  
Ms. Mary E. McCutcheon  
Mr. and Mrs. Craig E. McGarvey  
Ms. Danice McGrew  
Ms. Kathryn McGuire  
Ms. Joan B. McLoughlin  
Ms. Allison B. Mein  
Mr. and Mrs. Kenneth Meislin  
Richard and Kim Merritt  
Cecile and Jewel Michael  
Mr. Barry Milgrom and  
Ms. Jo Cummins  
Tracey and John Millham  
Ms. Nora Minassian  
Mr. and Mrs. Edward P. Miner  
Mrs. Teresa H. Mirabella  
Ms. Julie Montanari and  
Mr. David Pearson  
Mr. Gregory Moore  
Wesley and Kathleen Moore  
Vicky and John Morel  
Ms. Diane L. Morris  
Mr. Stephen Morris  
Ms. Kate Muller  
Ms. Mary Lu Murphy  
Mr. Richard S. Nair and  
Ms. Katherine D. Banks  
Mr. Alex Najjar  
Naomi Nakashima, M.D.  
Ms. Molly E. Naughton  
Dr. Beatrice Nold  
Ms. Melissa L. Norris  
Ms. Marnie Northrop  
Mr. John J. O'Brien  
Ms. Nancy O'Brien  
Ms. Ruth M. Ocheltree  
Mr. and Mrs. Richard W. Odgers  
Ms. Stephanie M. Orr  
Mr. and Mrs. Clyde Ostler  
Ms. Nancy J. Padgett  
Mr. and Mrs.  
William C. Pattison  
Mr. Thomas Pellizzer  
Mr. and Mrs.  
Thomas M. Perkins  
Ms. Darcy M. Pertcheck  
Ms. Sharyn L. Peterson  
Mr. and Mrs.  
Charles A. Pilgrim, Jr.  
The Piper Family

## HONOR ROLL, CONT'D

### SUSTAINERS , CONT'D

Mr. and Mrs. Myron Polycove  
Paul and Marina Porter  
Ms. Lynda D. Preston  
Mr. and Mrs. Martin Quinn  
Mr. Michael Rafferty and  
Ms. Lisa Henderson  
Ms. Samia Rashed  
Miss Winnifred B. Rawlings  
Mr. and Mrs. W.E. Reinka  
Mr. Stephen J. Revetria  
Melissa J. and Mark Richardson  
Charlie and Emily Robison  
Mr. and Mrs. James M. Roddy  
Anonymous  
Luis and Cheri Duke-Rojas  
Ms. Lillian Rolleri  
Mr. Ron Rosano and  
Ms. Susan Morrow  
Mr. and Mrs. Mark Rosen  
Mr. and Mrs. Donald H. Ross  
Mr. and Mrs. Kevin R. Ross  
Mr. Francis M. Rotella  
Mr. James Russell  
William and Stephanie Ryder  
Dr. Jeffrey R. Sachs  
Miss Suzanne Sampson  
Mr. and Mrs. Vern Sampson  
Dr. and Mrs. David M. Schaal  
Ms. Catherine B. Schmidt and  
Mr. Robert Karp  
Mrs. Mary Jo Schmidt  
Ms. Charlotte Schmidt-Luders  
Betty J. Schreiner, M.D.  
Mr. Jeffrey Schwind  
Mrs. Pamela Sebastian  
Jeffrey and Savannah Sellman  
Mr. Mark Shafir and  
Ms. Ruth Epstein  
Mr. and Mrs. Naresh Shanker  
Mr. and Mrs. James W. Shinn  
Mr. John D. Shuff and  
Ms. Crin Connolly  
Mr. Robert S. Silver  
Mr. Matthew Slepina and  
Ms. Diane Olmstead  
Mr. and Mrs. Wayne Smith  
Ms. Susana Speidel  
Mr. and Mrs. David C. Spielberg

Ms. Kathleen M. Stanley  
Mr. and Mrs. James J. Steiner  
Mr. Jay Steinman  
Ms. Susan Stern  
Richard and Michele Stratton  
Katherine K. Strelkoff, M.D.  
Mr. and Mrs. Eduardo Suarez  
Mr. and Mrs. Alex Sventitsky  
Ms. Elizabeth L. Taggart  
Ms. Joanna Taylor  
Ms. Ann Thomas  
Mr. and Mrs. Roland E. Thomas  
Linda and Thomas Thompson  
Mr. Michael Timpane and  
Ms. Jane Andersen  
Mr. and Mrs. Domenic J. Tintori  
Fr. Peter Tobias  
Mr. and Mrs. Eugene J. Toschi  
Ms. Karen Traversi  
Mr. and Mrs. Keith F. Underwood  
Mr. and Mrs. Vahid Vahedi  
Ms. Kristina Veaco  
Miss Gloria M. Victor  
Mr. Donald Volmering  
Ms. Helen Von Ammon  
Mr. and Mrs. Charles G. Walker  
Ms. Kathryn A. Wall  
Mr. Harry G. Walters and  
Ms. Gail G. Schatz  
Ms. Alyssa A. Warnock  
Mr. and Mrs. Richard Waugh  
Bonnie and Scott Wentworth  
Mr. and Mrs. Mark D. Westburg  
Miss Nancy P. Weston  
Mr. Stephen P. White  
Ms. Kendall Wilkinson and  
Mr. Gardner Robinson  
Larry and Rosarita Williams  
Ms. Muriel F. Wilson  
Mr. Robert T. Winovich  
Mr. Philip D. Witte and  
Ms. Rebecca L. Schnier  
Mr. and Mrs. Ralph R. Wolfe  
Ms. Marcelene Wolford  
Mr. and Mrs. Wade Woodson  
Mr. Edward Yates  
Ms. Jeanne L. Zitzer

### THANKS TO OTHER EXTRAORDINARY FRIENDS OF RAPHAEL HOUSE

Abbey Carpets  
American Conservatory Theater  
(A.C.T.)  
Annunciation Greek Orthodox  
Church Bible Study Group  
carol banks design  
Bread and Roses  
Carol Brownson  
Calvary Presbyterian Church,  
San Francisco  
Chefs' Association of the Pacific  
Children Artists of Raphael House  
Church of Jesus Christ/Latter  
Day Saints  
Narsai David  
Lucia Dugliss  
Food Runners  
Nicole and Dave Gogolak  
Holy Gleaning Co. Unlimited  
Harper Greer  
Elliot Katz, and Sara Lee  
Coffee & Tea Foodservice  
Marilyn Kelso  
Gary Koffler  
Wade Langill, Lynda Carroll  
and LiveZone  
Communications LLC  
Richard Leeds, D.D.S.  
Richard Lim and Fredco Marketing  
Mindshare Design, Inc.  
Royal Gourmet Coffee Shop  
Nancy Rowe  
Sacramento St. Prom. Assoc.  
San Francisco Hilton & Tower  
Seraphim Rose Press  
Steve Sherwood  
Kenneth L. Wong, D.D.S.  
Glen Young, D.D.S.  
Alanna Zrimsek and  
Morton Levin  
Ann Ferrell Millham and  
Tara Trask and the  
2004 Gala Committee  
Claudia Castillo Ross and  
the 2003 Gala Committee

*Space limits the number of donors we can list in the Honor Roll. We are grateful to all of our generous supporters for whatever amount or time they are able to contribute.*

**HONOR ROLL  
CORPORATE COUNCIL  
August 1, 2002 – July 31, 2004**

**CORPORATE PATRONS**

**\$25,000.00+**

The Capital Group Companies  
Charitable Foundation

**CORPORATE BENEFACTORS**

**\$10,000.00+**

Autodesk, Inc.  
The BEA Foundation  
JPMorgan Chase Foundation  
Cisco Systems Foundation  
GATX Capital Corporation  
Kraft Foods  
LVMH Selective  
Distribution Group  
McKesson Foundation  
Schneider & Wallace  
Union Bank of California  
Vodafone—US Foundation

**CORPORATE GUARDIANS**

**\$5,000.00+**

Bank of the West  
Conifer Securities LLC  
DATASAFE  
Morgan Stanley  
Pacific Union Community Fund  
Sara Lee Foundation  
Charles Schwab and Co., Inc.  
The Charles Schwab  
Corporation Foundation  
Target Stores  
Tilia, Inc.  
Wells Fargo  
World Savings

**CORPORATE SPONSORS**

**\$1,000.00+**

ABN AMRO Sage Corporation  
Advent Software, Inc.  
Altria Group, Inc.  
AMD Matching Gifts Program  
Babcock & Brown, Inc.  
Bank of America Foundation  
Bloomberg  
Boston Consulting Group  
Bunker & Company, LLP  
Capital and Counties U.S.A., Inc.  
Development Specialists, Inc.  
B.J. Droubi & Company  
E\*Trade Financial Corporation  
Federated Department Stores, Inc.  
Fredco Marketing  
Gap Foundation  
Gift Match Program &  
Money for Time  
Geomatrix Consultants, Inc.  
Greater Bay  
Bancorp Foundation  
Hearst Magazines  
Hewlett-Packard  
Hyperion Solutions  
Integrated Archive Systems, Inc.  
Intuit  
Levi Strauss Foundation  
Social Benefits Program  
Lightspeed Venture Partners  
Loomis Sayles & Company, Inc.  
Macy's West, Inc.  
The McGraw-Hill Companies

**CORPORATE SPONSORS (CONT'D)**

Merrill Lynch  
Metro PCS, Inc.  
Northern Trust Bank  
Peet's Coffee & Tea  
Presidio Sports & Medicine  
Providian Financial  
Corporation  
Safeway Cares Program  
Salesforce.com Foundation  
Sara Lee Coffee & Tea  
Foodservice  
Shamrock Moving and Storage, Inc.  
St. John Knits, Inc.  
Stone Yamashita Partners  
Sun Microsystems Foundation, Inc.  
SYMANTEC Corporation  
Treadwell & Rollo, Inc.  
VISA International  
Webcor Builders, Inc.

**CORPORATE SUSTAINERS**

**\$500.00+**

Farella, Braun & Martel  
Fireside Bank  
Genentech Employee  
Giving Program  
Group X, LLC  
Merck Employee  
Giving Campaign  
Microsoft Matching  
Gifts Program  
Orion Pacific Traders, Inc.  
Qualcomm Incorporated  
Rivel Research Group  
Skidmore, Owings &  
Merrill, LLP  
Wal-Mart Foundation

HONOR ROLL  
FOUNDATIONS

August 1, 2002 – July 31, 2004

**FOUNDATION ANGELS**

**\$100,000.00+**

Silver Giving Foundation

**FOUNDATION PHILANTHROPISTS**

**\$50,000.00+**

Grousbeck Family Foundation

Robert and Helen Odell Fund

**FOUNDATION PATRONS**

**\$25,000.00+**

Children of Shelters

The Herbst Foundation

Richard & Rhoda Goldman Fund

McBean Family Foundation

May and Stanley Smith

Charitable Trust

Virgah Family Foundation

**FOUNDATION BENEFACTORS**

**\$10,000.00+**

Anonymous

Bothin Foundation

George and Ruth Bradford  
Foundation

Virginia H. Farah Foundation, Inc.

The David B. Gold Foundation

The. Margaret E. Haas Fund

Evelyn & Walter Haas, Jr. Fund

Crescent Porter Hale Foundation

The Kimball Foundation

The Stanley S.  
Langendorf Foundation

The Henry Mayo Newhall  
Foundation

The O'Shea Foundation

The Bernard Osher Foundation

The San Francisco Foundation

Annunziata Sanguinetti  
Foundation

Samuel M. & Helene K.  
Soref Foundation

Morris Stulsaft Foundation

VanLobenSels/RembeRock  
Foundation

**FOUNDATION GUARDIANS**

**\$5,000.00+**

The Atmos Foundation

The James and Alvina Bartos  
Balog Foundation

Malcolm Cravens Foundation

William G. Gilmore Foundation

Walter and Elise Haas Fund

Saints and Sinners Fund

George H. Sandy Foundation

Charles and Helen Schwab  
Foundation

**FOUNDATION SPONSORS**

**\$1,000.00+**

Alexander & Baldwin Foundation

Bay Meadows Foundation

Bewley-Motluk Charitable  
Foundation

Blue Oak Foundation

Mervyn L. Brenner  
Foundation, Inc.

Danford Foundation

Fred Gellert Family Foundation

Carl Gellert & Celia Berta  
Gellert Foundation

The Geomar Foundation, Inc.

The Guardsmen

Karol Uryga-Nawarowski  
Foundation

Louis R. Lurie Foundation

The Maisel Foundation

The Joseph R. McMicking  
Foundation

Gordon and Betty Moore  
Foundation

John Robinson Foundation

The San Francisco  
Professional Food Society

Sidney Stern Memorial Trust

Robert K. & Barbara J. Straus  
Family Foundation

Shelter Fund of the  
Tides Foundation

Trust Funds Incorporated

The Willow Foundation

Wilsey Foundation

The Oprah Winfrey Foundation

**FOUNDATION SUSTAINERS**

**\$500.00+**

James Irvine Foundation

**HONOR ROLL**  
**CONGREGATIONS AND CIVIC GROUPS**  
 August 1, 2002 – July 31, 2004

**ANGELS**

**\$100,000.00+**

Christ the Saviour Brotherhood

**GUARDIANS**

**\$5,000.00+**

Holy Trinity Cathedral

Orthodox Christian Fellowship

Pass It Around!

**SPONSORS**

**\$1,000.00+**

Brandeis Hillel Day School

Calvary Presbyterian Church

Episcopal Charities,  
Donor Advised Fund

First Presbyterian Church  
of St. Helena

Greek Orthodox Cathedral  
of the Ascension

Holy Dormition Bulgarian  
Orthodox Church

Protection of the  
Holy Virgin Parish

San Francisco Cycling, LLC

Sisterhood of St. Mary's  
Orthodox Church

South End Rowing Club

State Fund Task Force

Unity Christ Church

**SUSTAINERS**

**\$500.00+**

Daughters of the British Empire

Diocese of the West,  
Orthodox Church of America

Junior California Club

Post Montgomery Associates

St. John Orthodox Church

St. Nicholas Orthodox Church

St. Thomas Albanian  
Orthodox Church

St. Vincent Youth Group

Waldorf School, San Francisco

**OTHER - (\$100.00 + )**

Association of  
Government Accountants

Assumption of the  
Holy Virgin Church

Canadian Women's Club  
of SF Bay Area

Chapter EN PEO

Church of the Synaxis of  
The Holy Theotokos

Congregation Beth Israel-Judea

First Mennonite Church  
of San Francisco

Order of the Eastern  
Star/Golden Gate Chapter No.

Orthodox Christian Church  
of the Holy Resurrection, NJ

Orthodox Monastery of  
the Transfiguration

Our Lady of Kazan Skete

San Francisco Firefighters

St. Andrews Orthodox Church

St. Innocent Orthodox  
Church Mission

St. Michael Orthodox Church

St. Nicholas Orthodox Church

Sterne School

**AND SPECIAL THANKS TO**

Aegis of Moraga

Aegis of South San Francisco

Annunciation Greek  
Orthodox Cathedral

Epsilon Sigma Alpha

Farmers Garden

Golden Gate Elementary School

Kaiser Permanente

Lick-Wilmerding High School

Presbyterian Women of  
Lincoln Park Church

The Loving Life Foundation

Marin Day School

The Olympic Club

San Francisco Day School

St. Anne of the Sunset  
Catholic Church

St. Ignatius College Prep

UCSF — Cardiovascular  
Research Institute (CVRI)

United Brotherhood  
Carpenters and Joiners  
of America

Veterans' Administration  
Hospital

**BOARD OF DIRECTORS  
2003 – 2004**



**Devin Dixon**  
Chairman of the Board



**Janet F. Chapman**  
Vice President  
Chief Privacy Officer  
Charles Schwab & Co., Inc.



**John M. Latta**  
Orion Group LLC



**Stephanie Orr**  
Assistant Vice President  
Capital Group Companies



**Fr. David Lowell**  
Executive Director,  
Raphael House



**J. Hallam Dawson**  
Chairman IDI Associates



**Ann Ferrell Millham**  
Community Volunteer



**Andre Paez**  
Senior Loan Officer  
BWC Mortgage Services



**Lita Benton Anderson**  
Manager  
Office of Special Events  
American Red Cross



**Edward D. Haas**  
Roeca Haas Hager LLP



**Stanley Morrival**  
Morrival Insurance Services



**Claudia Castillo Ross**  
Director  
Marie Claire Magazine and  
Harper's Bazaar Magazine



**Bob Andrews**  
Cambridge Associates LLC



**Peter V. Hall**  
Global Co-Head  
Heidrick & Struggles



**Carole A. Obley**  
Vice President  
Bank of the West



**David Swartz, C.F.A.**  
Vice President  
Merrill Lynch

**Lloyd O. Haefner**  
Director Emeritus

**Francis J. Rigney, M.D.**  
Chairman Emeritus

**BOARD OF DIRECTORS  
2002 – 2003**

**John Hinman**  
Chairman of the Board  
Hinman & Carmichael

**Fr. David Lowell**  
Executive Director  
Raphael House

**Randa Aoun**  
Appointed Live-in Community Representative  
Raphael House

**Lita Benton Anderson**  
Manager, Office of Special Events  
American Red Cross

**Janet F. Chapman**  
Vice President  
Chief Privacy Officer  
Charles Schwab & Co., Inc.

**J. Hallam Dawson**  
Chairman, IDI Associates

**Devin Dixon**  
Volunteer

**Edward D. Haas**  
Roeca Haas Hager LLP

**Peter V. Hall**  
Global Co-Head  
Heidrick & Struggles

**Lynn Lannon**  
Principal, The Lannon Group

**John M. Latta**  
Orion Group LLC

**Stanley Morrival**  
Morrival Insurance Services

**Carole A. Obley**  
Vice President  
Bank of the West

**Claudia Castillo Ross**  
Director  
Marie Claire Magazine and  
Harper's Bazaar Magazine

**David Swartz**  
Vice President, Northern Trust

**Elaine Taylor**  
Consultant

**Mary Wolfe**  
Consultant

**Francis J. Rigney, M.D.**  
Chairman Emeritus

**Lloyd O. Haefner**  
Director Emeritus

**RAPHAEL HOUSE ADVISORY COMMITTEE  
2003 – 2004**

**Fr. David Lowell**  
Executive Director,  
Raphael House

**Randa Aoun**  
Special Events  
Coordinator  
St. Vladimir's Orthodox  
Theological Seminary

**Angela  
Alessandroni**  
Administrative Assistant  
Raphael House

**Rev. Thomas  
Alessandroni**  
Former Raphael House  
Program Supervisor

**Rev. Lawrence  
Gaudreau**  
St. Mary Holy  
Dormition Church  
Calhan, CO

**Very Rev.  
Thomas Hopko**  
Dean Emeritus  
St. Vladimir's Orthodox  
Theological Seminary

**Very Rev. Ian  
MacKinnon**  
Rector  
Elevation of the Holy  
Cross Church  
Sacramento

**Rev. Michael  
Nasser, Director**  
Antiochian Village  
Bolivar, PA

**Very Rev.  
Basil Rhodes**  
Dean  
Pacific Central Deanery  
Diocese of the West  
Orthodox Church in  
America

**Very Rev.  
Victor Sokolov**  
Dean  
Holy Trinity Cathedra  
San Francisco

**Rev. Nicholas C.  
Triantifilou**  
President  
Hellenic College &  
Holy Cross  
Greek Orthodox  
School of Theology

**Anton Vrame, Ph.D.**  
Director  
Patriarch Athenagoras  
Orthodox Institute  
Raphael House